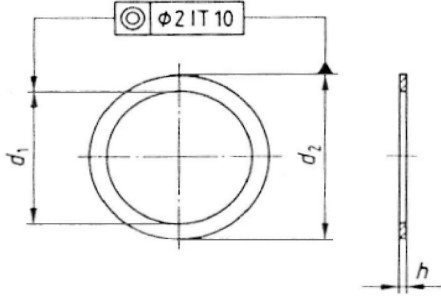


DIN988

Pasing
Paßscheibe
Shim ring



h						max.=maat															
						0,1	0,15	0,2	0,3	0,5	1	1,1	1,2	1,3	1,4	1,5	1,6	1,7	1,8	1,9	2
						min.															
maat	d1	max.	maat	d2	max.																
3	3,02	3,12	6	5,85	5,97																
4	4,03	4,15	8	7,81	7,96																
5	5,03	5,15	10	9,81	9,96																
6	6,03	6,15	12	11,77	11,95																
7	7,04	7,19	13	12,77	12,95																
8	8,04	8,19	14	13,77	13,95																
9	9,04	9,19	15	14,77	14,95																
10	10,04	10,19	16	15,77	15,95																
11	11,05	11,23	17	16,77	16,95																
12	12,05	12,23	18	17,77	17,95																
13	13,05	13,23	19	18,725	18,935																
14	14,05	14,23	20	19,725	19,935																
15	15,05	15,23	21	20,725	20,935																
16	16,05	16,23	22	21,725	21,935																
17	17,05	17,23	24	23,725	23,935																
18	18,05	18,23	25	24,725	24,935																
19	19,065	19,275	26	25,725	25,935																
20	20,065	20,275	28	27,725	27,935																
22	22,065	22,275	30	29,725	29,935																
22	22,065	22,275	32	31,67	31,92																
25	25,065	25,275	35	34,67	34,92																
25	25,065	25,275	36	35,67	35,92																
26	26,065	26,275	37	36,67	36,92																
28	28,065	28,275	40	39,67	39,92																
30	30,065	30,275	42	41,67	41,92																
32	32,08	32,33	45	44,67	44,92																
35	35,08	35,33	45	44,67	44,92																
36	36,08	36,33	45	44,67	44,92																
37	37,08	37,33	47	46,67	46,92																
40	40,08	40,33	50	49,67	49,92																